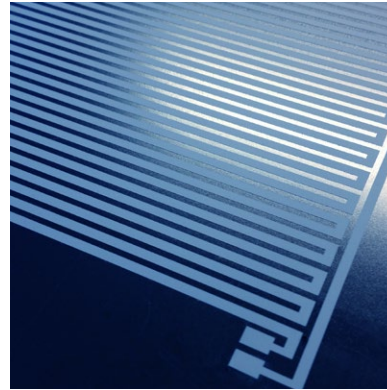
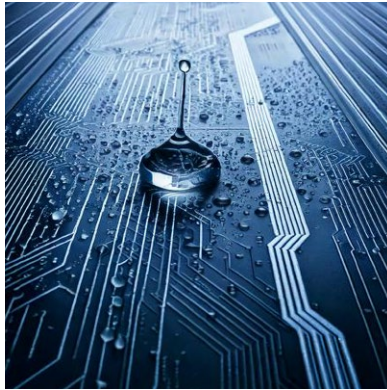
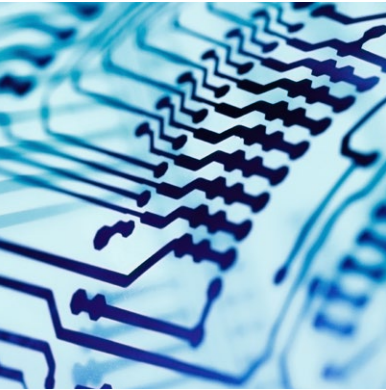




# Printed Electronics

## Your partner for develop, design and manufacture



# Bridging rigid electronics and flexible interfaces

Real-time monitoring and intelligent  
interaction through adaptability to  
flexible and functional surfaces



# Printing the future of smart systems

## Witte Technology GmbH has been involved in the printing industry for 100 years

We have experience in sheet-to-sheet and roll-to-roll printing products for various sectors worldwide, ranging from industry to automotive and healthcare.

## Printed electronics is one of our core competencies.

With our expertise in materials, printing and further processing and our modern production capacities, we manage the entire development of different types of printed electronics products so that we can accompany and support our customers from initial concept through prototyping to industrial series manufacturing. Our focus is particularly on flexible, stretchable and functional printed products that offer applications in various industries, such as medical technology, automotive and consumer goods industry.

## Why creating your printed electronics product with the Witte Technology Team?

- Functional and non-functional printing
- Cleanroom conditions
- Customised solutions
- Product development
- Contract manufacturing
- Scale up solutions
- Advanced converting options
- Mass production
- Roll2Roll, Roll2Sheet and Sheet2Sheet in large format
- Partners for electronics and data readout



Member of the German Association  
of the Automotive Industry



Organic and Printed  
Electronics Association



Quality management in accordance  
with ISO 9001 and ISO/TS 16949



Environmental management in  
accordance with ISO 14001

# Our production expertise



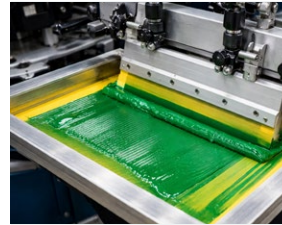
## Certified Cleanroom Precision

We provide end-to-end manufacturing in a certified cleanroom environment, ensuring reliable, reproducible production for medical, automotive, and industrial sensor applications.



## Quality Assurance

Our manufacturing line includes 100% in-line quality control, complemented by in-house laser structuring and die-cutting, ensuring traceability, reliability, and compliance with industrial standards.



## Screen Printing

High-precision printing for defined layer thickness as well as fine lines down to 100 $\mu$  or below with excellent functionality and durability.



## Flexographic Printing

Efficient roll-to-roll processing for large-scale production, achieving speeds of up to 100 feet per minute with consistent quality.



## Digital Printing

Ideal for bringing visual features, barcodes and variable information to functional products.

# Smart solutions across global key markets



## Healthcare & Medical Wearables

Flexible smart patches for continuous monitoring of vital signs, body temperature, and diagnostic signals such as ECG, EMG or EEG.



## Automotive

Interactive, comfort-enhancing surfaces with lightweight formable heaters, embedded sensors, antennas and printed interconnects.



## Smart & secure packaging

Printed security foils with integrated conductive traces to protect high-value/sensitive components. Sensor-enabled packaging for logistics transparency (NFC/RFID with temperature, humidity, leak-detector sensor combination).



## IOT & Smart building

Large area printed sensors integrated into buildings for structural & environmental monitoring.

**Witte Technology GmbH**

Sendener Stiege 4  
48163 Münster  
Germany

Tel.: +49 2536 991-0  
mail@witte-technology.com

**Point of Contact****Danny Nitzsche**

Tel: +49 25 36 9 91 – 103  
Mobil: +49 170 330 84 88  
nitzsche@witte-technology.com

**Administration**

Obere Remscheider Strasse 15  
42929 Wermelskirchen  
Germany

Tel.: +49 2196 7072-0  
verwaltung@witte-group.com

**MGM Guadalajara**

Periferico Sur 6400-B |  
Col. Artesanos, Tlaquepaque,  
Jalisco | México 45598

Tel.: +52 33 3478 2500  
mail@mgmex.com.mx  
mgmex.com.mx



[www.witte-technology.com](http://www.witte-technology.com)