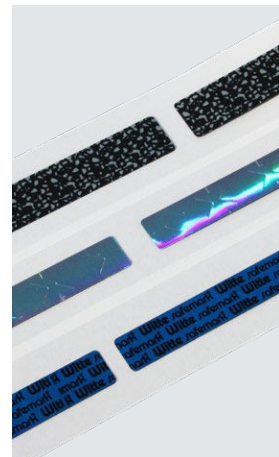
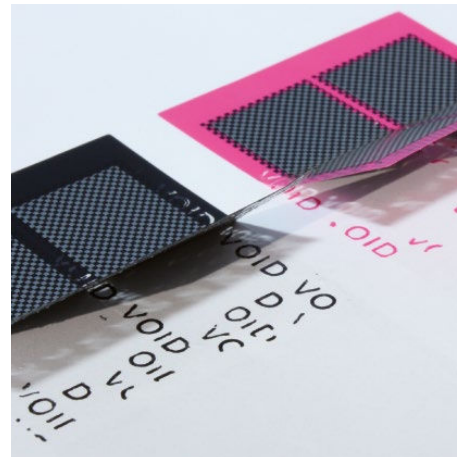
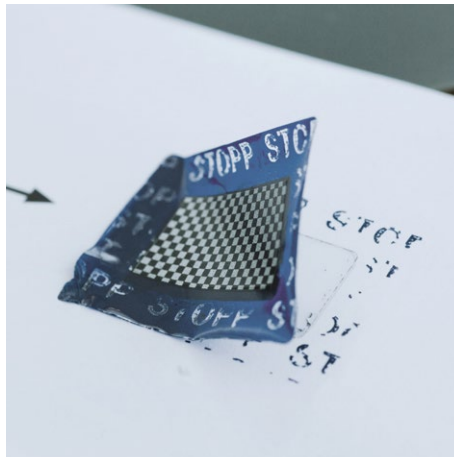
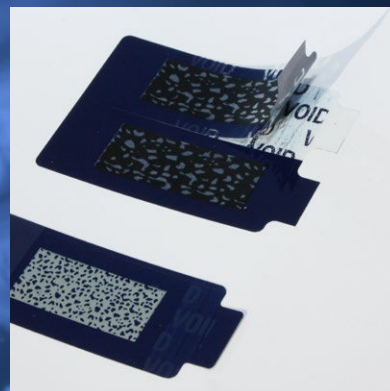
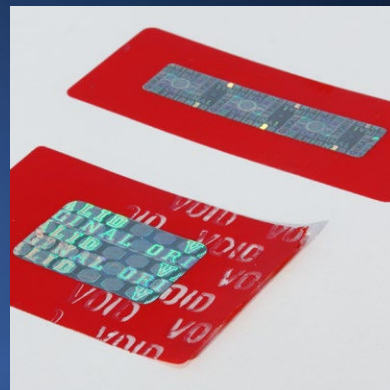


# Witte safemark<sup>®</sup> High-Security-Labels for unique PIN Solutions



# Label-solutions for PIN-Mailings and Pin Label for Cards



**Witte safemark® is specialized in the development and production of security labels.**  
**Numerous certificates as security printer confirm our high security standards.**

#### **VOID PIN/PUK-Label**

- for PIN-mailings with VOID-effect
- available in different sizes, colors and scratch-effects
- one or more scratch-pads

#### **VOID Peel-off-Label**

- for PIN-mailings with Peel-off-function
- double-layered label
- available in different sizes and colours

#### **High Security VOID-Label**

- includes a combination of different security features,  
e.g.
  - security-slits
  - VOID-effect
  - customized scratch-off-hologram
- double-layered label
- available in different sizes and colours

#### **Scratch-Label**

- for prepaid-, giftcards, ...
- consists of a transparent foil and an opaque scratch-ink-coating
- with security-slits
- available in different sizes, colours and designs
- available with paperliner or PET-liner for high-speed application

#### **Hologram Scratch-Label**

- for prepaid-, giftcards, ...
- available with standard or customized hologram
- available in different sizes and with different security-die cuts

#### **Eco Scratch-Label**

- paperbased – environmentally friendly solution
- available with VOID-Effect
- available in different sizes and colours
- for high speed application



Certified for processing  
of Sicpa security inks



Quality printing standard  
security printer



Quality management  
in accordance with ISO 9001



Environmental management in  
accordance with ISO 14001



## Witte Technology GmbH

Geschäftsbereich: safemark®

Sendener Stiege 4

48163 Münster . Germany

Tel.: +49 2536 991-100

safemark@witte-technology.com

[www.witte-technology.com/en/produkte/pin-puk-labels](http://www.witte-technology.com/en/produkte/pin-puk-labels)

